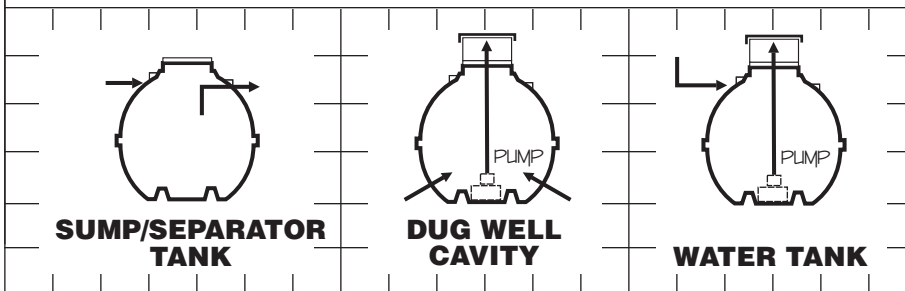
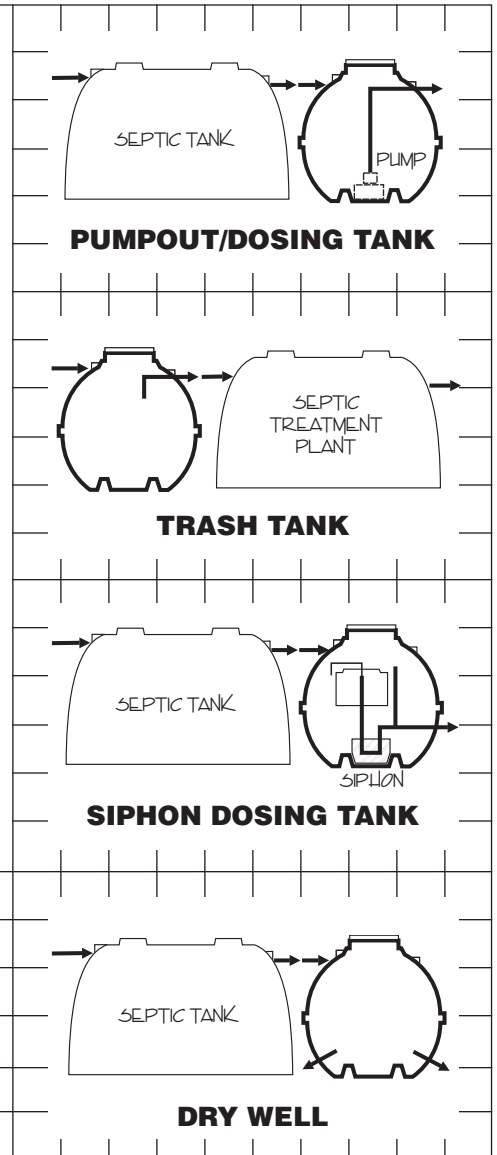


'FAT ALBERT'

(The Tank)



- 'FAT ALBERT' Features:**
- ★ Durable polyethylene
 - ★ ONE-PIECE leak-proof construction
 - ★ Light weight – easy installation
 - ★ Environmentally safe
 - ★ Optional riser for grade access
 - ★ 10 YEAR WARRANTY

Look for the PREMIER label of quality. PREMIER PLASTICS ... Your tank authority!



PREMIER PLASTICS INC.
 8328 River Way, Delta, BC, Canada V4G 1C4
 Bus: (604) 952-6686 Fax: (604) 952-6696
 Toll Free: 1-800-661-4473
 E-mail: office@premierplastics.com
 www.premierplastics.com

Represented by:

PRODUCT DATA SHEET

'FAT ALBERT' SPECIFICATIONS:

Material: High density linear polyethylene (safe for food contact-water tanks). Meets FDA regulations 21 CFR 177.1520(C) 3.1

Plumbing: Tanks are fitted with 4" solvent weld PVC pipe connections at tank wall for specific application. Pumps and siphon units by others. Tanks single compartment only.

Access Lid: One 18" I.D., 23½" O.D. Heavy duty molded polyethylene. Lid safety secured with 6 corrosion-resistant lag screws. NOTE: Cistern tanks may be sealed water tight with bead of clear silicone caulk under lid.

Riser: Optional riser for direct access from the ground surface fits over access lid on the tank. Riser base must be lag-screwed to the top of the tank. An additional lid on the riser provides additional safety and security. (Lid on tank remains screwed in place, if possible.)

Water Table: Use Extra Heavy (EH) units in wet sites.

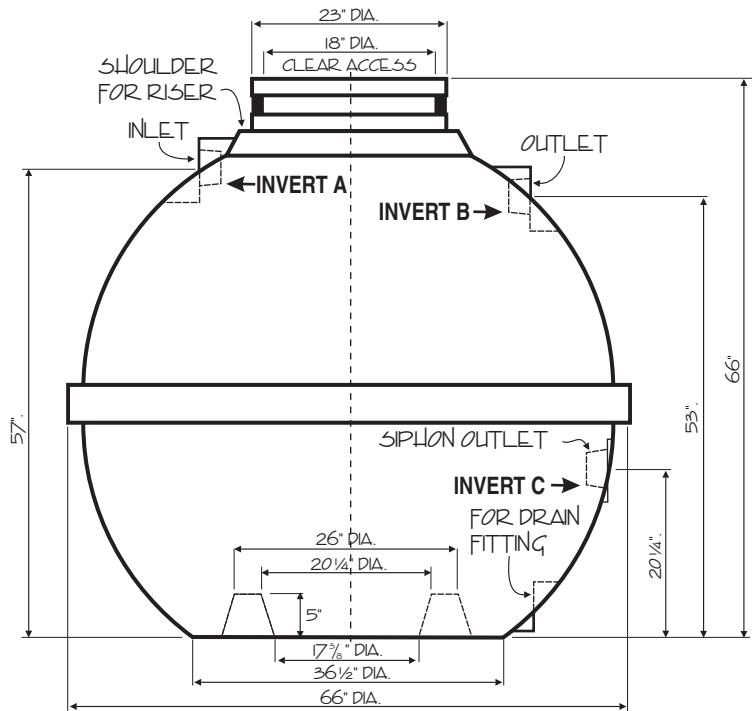
Anchoring: Tanks should be anchored down where there is a risk of periodic high water table lifting the tank when empty.

Installation: Use GRANULAR SOIL BACKFILL ONLY. Remove rocks from tank surface, trample in 12" layers EVENLY underneath and around tank. Lid MUST be screwed in place when backfilling. Use extra heavy weight (EH) tank in clay soils. Refer to installation instructions.

Bury Depth: Top of tank to surface. Max. soil density 125 lbs/ft³

Model no.	Weight	Max. bury depth
PO 500	190 lbs	2'
PO 500EXT	212 lbs	2'
PO 500EH	264 lbs	4'
PO 500EH EXT	295 lbs	4'

Warranty: Premier Plastics below ground tanks are warranted for 10 years against defects and degradation in the material at no extra warranty charge.



VOLUME IN TANK

DEPTH (inches)	IMP. GAL.	U.S. GAL.
60	500	600
INVERT A	480	575
54	470	565
INVERT B	460	552
48	430	516
42	380	456
36	320	384
30	255	306
24	187	225
INVERT C	132	160
18	125	150
12	70	84
6	22	26

SELECTION GUIDE

(Compliance with local Health Authority must be checked prior to installation)

APPLICATION	MODEL NO.	FITTINGS / NOTES / INSTRUCTIONS
Pumpout / Dosing Tank	PO 500	4" PVC spigot on inlet.
Trash Tank	TR 500	4" PVC Tee-Y on inlet and outlet. Install riser for cleaning access. Align outlet Tee-Y with access opening if screen filter installed.
Siphon Dosing Tank*	SI 500	4" PVC spigot on inlet and outlet. 'O' ring and gear clamp on outlet. Set siphon in concrete base.
Dry Well	DW 500	4" PVC spigot on inlet. Drill 1 1/2" holes 12" apart around lower half. Install as approved by local Health Authority.
Sump / Separator Tank	SP 500	4" PVC Tee-Y on inlet and outlet. Install riser for cleaning access.
Dug Well Cavity	DW 500EH**	Drill 1 1/2" holes 12" apart around lower half. Install riser or pipe for pump insertion.
Water Tank (Cistern)	CIS 500	Fittings as required by customer.

* Tank accommodates "Fluid Dynamics Siphons Inc. Models 207, 313, 413, 417, 423 and 430. Contact your septic tank supplier.

** EH - Extra Heavy. EXT - 14¼" Riser Extension